

Module 3

//

Gingivoplasty and implant surgery
in anterior area: from surgery
to prosthetic restoration

//

Course Lecturer

Roman Gudyma is a practicing dental implant surgeon with 12 years of experience. He is a follower of MALO clinic, a member of Real Bone Builders (bone laminae restoration) group, and a member of Hurceler-Zuhr soft tissue grafting school member.



Dr. Gudyma is the founder of Educational Centre Dentaro Study Club, the principal dentist of Dentaro Garden Clinic, the founder of dental laboratory Dentaro Lab.

Roman Gudyma is in demand as dental implant surgeon in 15 cities in Ukraine. He implements international experience in implant surgery development in Ukraine as well as advises colleagues all over the country.



We make a substantial contribution to implant surgery development in Ukraine.

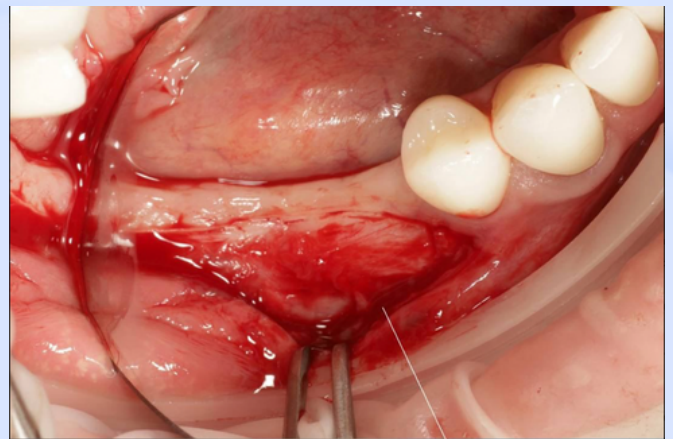
About the course

What are you going to learn?

Soft tissue is a component which makes the crown on an implant comfortable and ensures the implant longevity. A prerequisite of this is immovable, sufficient by volume mucosa around the implant-supported restoration. It is attainable for every dental surgeon to achieve this using the technique by Otto Zuhur Hurceler.

Provided in the course:

- Individual workplace
- Printed check-lists and sheets of paper
- Phantoms (pig jaws)
- You need binocular magnifying glass in order to successfully complete the course



+ A team of 10 people including instructors-assistants ready to help at every step

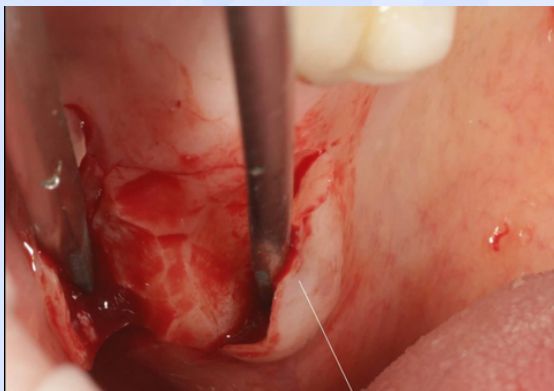
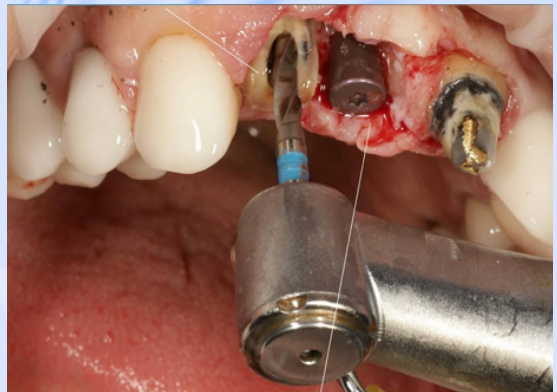
Course overview:

Day 1

1. Dental surgery tray setup
2. Tools and equipment selection
3. Incision types
4. Selection of blade depending on intervention site
5. Mastering many types of practical suturing techniques
6. Selection of suture material depending on the clinical presentation
7. Flap types
8. Blade selection
9. Atraumatic tooth extraction protocol
10. Alveolar socket preservation with bone grafting material
11. Wisdom tooth extraction protocol for upper and lower jaw
12. Suturing techniques
13. Analysis of clinical cases

Day 2

1. Ergonomics of dental implant surgeon's work: necessary tools and equipment
2. Classic two-stage implant placement
3. Immediate implant placement
4. Implant placement using guided template
5. Implant placement using fully-guided template
6. Treatment planning and estimation
7. Tools selection
8. Working with CBCT



70% of learning is practice

CONTACT OUR MANAGER TO REGISTER
FOR THE COURSE

Manager

+372 55 223 93

Join us on social media:

- ✈ Dentaro Study Club
Implantology Teaching
- 📷 [dsc.dentaro.study.club](https://www.instagram.com/dsc.dentaro.study.club)
- 🌐 dsc-implantology.com.ua

